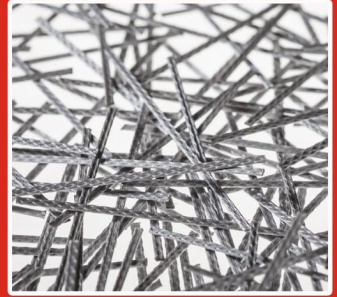




ADFIL
Construction Fibres



Adfil Fibres
Marine & Coastal
Applications

Scan here for additional information

UK Office: Adfil Ltd 6th Floor, 9 Appold Street,
London, EC2A 2AP.

UK Customer Services & Orders

Tel: +44 (0)1482 274777 or E-mail: Orders@adfil.com

Reinforced concrete reinvented

Belgium Office: Adfil NV Industriestraat, 39 9240,
Zelee Belgium

Belgium Office Tel: +32 52 24 00 00

www.adfil.com

Synthetic Fibre Reinforced Concrete In Marine & Coastal



Adfil macro & micro synthetic fibres can be used in a wide range of marine and coastal reinforced concrete applications to replace conventional steel mesh reinforcement.

Challenges

In marine and coastal environments, constant exposure to water, especially sea water, can cause devastating damage to concrete structures as a result of steel corrosion.

This is a high energy environment created by wave action and abrasion from shingle and sand particle impacts. The concrete used in these applications must have a high durability to ensure design service life is maintained.

Time constraints resulting from tidal movements are also a major factor. Ease of construction and reduced construction time present a huge benefit to the installer. Where a coffer dam is required for installation, the importation of welded steel mesh reinforcement to the construction site can be difficult and dangerous due to a restricted working area.



Church Scar Sea Defences

Synthetic Fibre Reinforced Concrete In Marine & Coastal



Solution

The replacement of conventional welded steel mesh with Durus synthetic macro fibre will eliminate the risk of corrosion and any associated problems. Synthetic macro fibre reinforcement will allow more efficient installation as there is no requirement for handling, placement and fixing of steel mesh. This will significantly reduce construction time. The risk of steel mesh being placed incorrectly, with inadequate cover, will not be a factor if it is replaced with Durus macro synthetic fibres, which will be dispersed consistently throughout 100% of the volume of the concrete on delivery to site. The use of Durus will also eliminate significant health and safety hazards associated with steel fixing. The use of Fibrin XT micro synthetic fibre will enhance the abrasion resistance of the concrete by around 60%*, and more than double the impact resistance**. This will extend the service life of the concrete structure in these aggressive environments. Fibrin XT will also reduce permeability and the occurrence of plastic shrinkage cracking. This is a significant consideration with regards to the ingress of water into the concrete structure which can lead to accelerated damage and shortened service life.



River Flood Defences

Adfil fibres have been used in concrete for river flood defence projects to increase their structural performance and durability. These benefits will be a high priority where design life is paramount to ensure lower long term maintenance costs.

* Proven by accredited Test Data from
Aston University

** Proven by accredited BBA Certificate

River Parrett Devon

Synthetic Fibre Reinforced Concrete In Marine & Coastal



Compliance

Adfil fibres are compliant with the Environment Agency's Minimum Technical Requirements

(MTR) WEM Table for Fibres in Marine Concrete and CIRIA C674 Use of Concrete in Maritime Engineering.

Lagoons/ Reservoirs

These are generally mass reinforced concrete structures which are engineered to contain high volumes of water.

Penetration of water into the concrete will result in corrosion of any steel reinforcement used in construction, causing spalling.

Over time, spalling of the concrete will lead to weaknesses in the mass structure, potentially resulting in a containment breach and failure. The use of Durus synthetic fibre reinforcement will eliminate the problems associated with steel corrosion and maintain design life.



Sea Lagoon

Synthetic Fibre Reinforced Concrete In Marine & Coastal

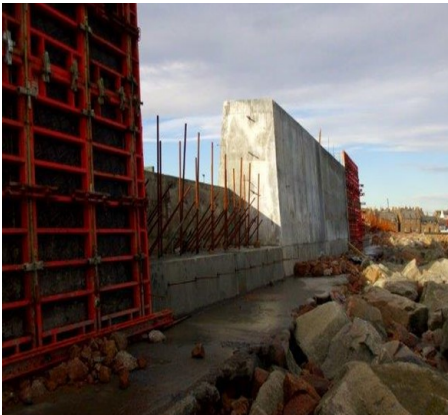


Harbours / Slipways

With harbours and slipways being governed by tidal fluctuations, concrete structures in these situations can be above and below the water level. Any steel reinforcement is at high risk of corrosion resulting in a shortened service life. Polypropylene fibres are not susceptible to corrosion so will maintain the integrity of the concrete in this environment. The use of Durus synthetic fibre reinforcement will also negate the need for steel fixing, resulting in easier and quicker installation where tidal factors are a consideration. The restricted nature of a site inside a coffer dam makes the use of mesh difficult and dangerous. A challenge that can be overcome with Durus synthetic fibre reinforcement.



Mamhead Slipway



Peterhaed Sea Defence

Sea Defences

Sea defences are subjected to high energy from wave action and constant abrasion and impacts from projected beach shingle particles. To ensure the concrete is sufficiently durable to cope with these environments, the addition of Fibrin XT synthetic micro fibre will enhance the impact resistance and abrasion value of the concrete, as well as reducing permeability. By replacing, where possible, conventional steel mesh with DURUS Macro Synthetic Fibre, the high risk of long term damage due to steel corrosion is eliminated. This provides an effective solution and ensures design service life is maintained in line with project requirements.



ADFIL
Construction Fibres

Synthetic Fibre Reinforced Concrete In Marine & Coastal



Southwick Groynes



Brighton Sea Defence



Whitby Sandsend



Ryhl Sea Defence

UK Office: Adfil Ltd 6th Floor, 9 Appold Street, London, EC2A 2AP. **UK Customer Services & Orders**
Tel: +44 (0)1482 274777 or E-mail: Orders@adfil.com

Belgium Office: Adfil NV Industriestraat, 39 9240, Zele, Belgium
Belgium Office Tel: +32 52 24 00 00
www.adfil.com



ADFIL
Construction Fibres

Synthetic Fibre Reinforced Concrete In Marine & Coastal



Jersey Gorey Harbour



Bridport West Bay Harbour



West Yorkshire Butterly Reservoir



Fairhaven

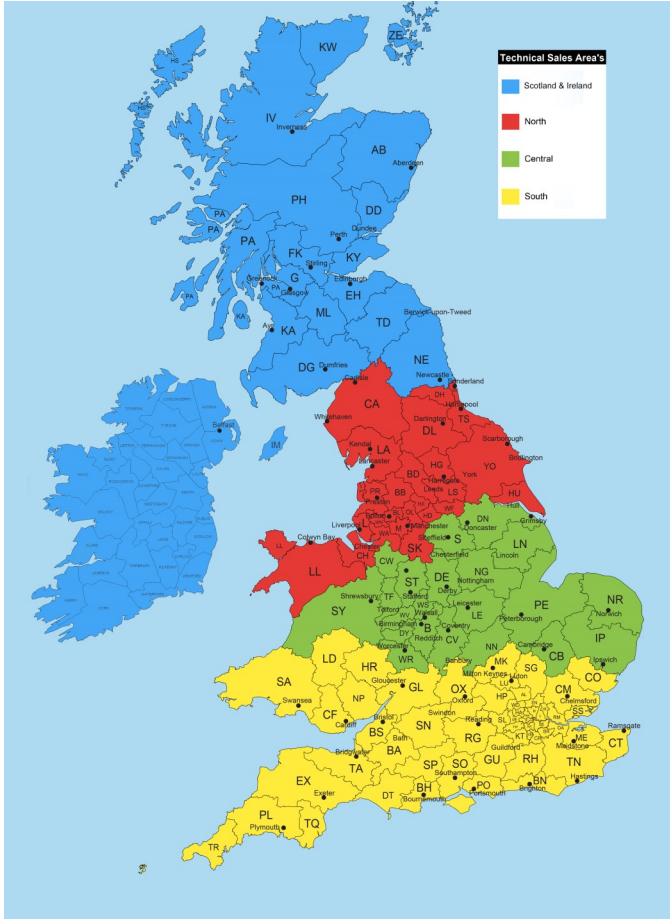
UK Office: Adfil Ltd 6th Floor, 9 Appold Street, London,
EC2A 2AP. **UK Customer Services & Orders**
Tel: +44 (0)1482 274777 or E-mail: Orders@adfil.com

Belgium Office: Adfil NV Industriestraat, 39 9240,
Zele, Belgium
Belgium Office Tel: +32 52 24 00 00
www.adfil.com



UK Technical Sales

Assistance



For any assistance please contact one of the following to get appropriate technical support:

Scotland & Ireland :
+44 (0)7516506016

Northern :
+44 (0)7785616975

Central :
+44 (0)7801300966

Southern :
+44 (0)7824015717

National :
+44 (0)7801595581

Customer Service T: +44 (0) 1482 274777 E: orders@adfil.com

Reinforced concrete reinvented

The content of this promotional material is for information, illustration and marketing purposes only and is subject to change without notice. While we endeavour to keep the content of this promotional material up to date and correct, we make no guarantees, warranties or representations of any kind about the completeness, accuracy, reliability or suitability thereof. We exclude liability for any inaccuracy or error in the information or any action taken in reliance thereon by any party, whether potential purchaser or otherwise. It is your own responsibility to ensure that the information available through this promotional material meets your specific requirements. From time to time, our website may include links to third party websites. These links are provided for your convenience to provide further information. They do not signify that we endorse the websites. We accept no liability for the content of these websites. The content of our promotional material is owned by or licensed to us. This content includes, but is not limited to, design, layout, look, appearance and graphics. Reproduction is prohibited other than in accordance with the intellectual property laws of Belgium.

PC-ENG-UK-06/2022

UK Office: Adfil Ltd 6th Floor, 9 Appold Street, London, EC2A 2AP. **UK Customer Services & Orders**
Tel: **+44 (0)1482 274777** or E-mail: **Orders@adfil.com**

Belgium Office: Adfil NV Industriestraat, 39 9240, Zele, Belgium
Belgium Office Tel: +32 52 24 00 00
www.adfil.com